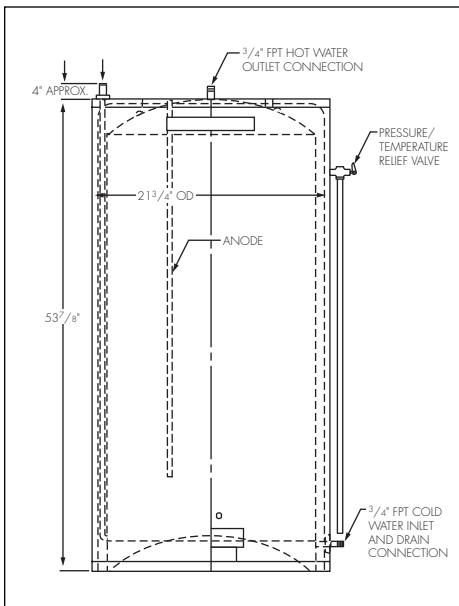
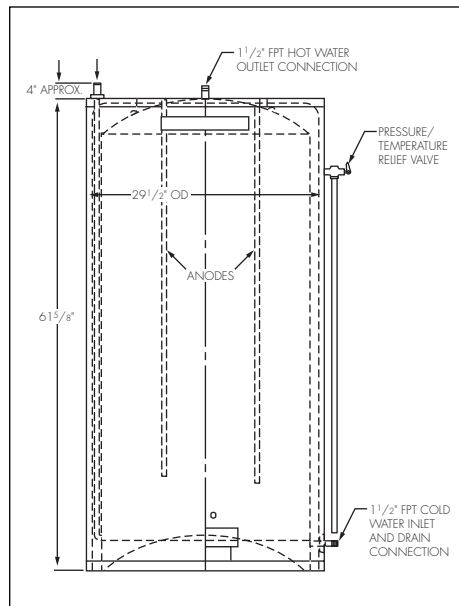


MUELLER® FRE-HEATER®

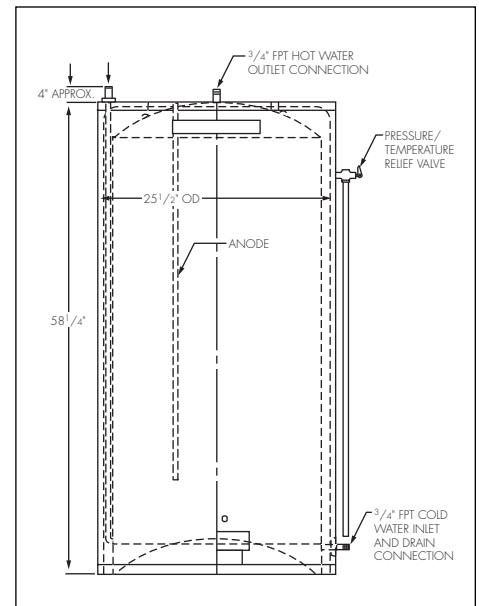
SUBMITTAL FORM



**50-GALLON
MODEL "D" FRE-HEATER**
3/4" Water Connection Tank



**119-GALLON
MODEL "D" FRE-HEATER**
1 1/2" Water Connection Tank



**80-GALLON
MODEL "D" FRE-HEATER**
3/4" Water Connection Tank

MUELLER FRE-HEATERS SAVE YOU MONEY BY PROVIDING FREE HOT WATER.

Mueller's patented stainless steel Temp-Plate® is the heart of the Fre-Heater system. This highly efficient heat transfer surface is constructed of 100% stainless steel. Thoroughly tested and listed by Underwriters Laboratories Inc., it meets all codes required for double-wall heat exchanger construction.

The industrial-grade, glass-lined water storage tank resists rust and features two replaceable magnesium anodes for extra protection against natural water corrosion, increasing the life of the tank.

Mueller Model "DE" Fre-Heaters offer all of the features of a standard Mueller Model "D" Fre-Heater with the addition of a 4,500-watt, 240-volt electric element. Available in 80- and 119-gallon sizes.

FRE-HEATER SPECIAL FEATURES:

- ▲ Heats and stores in one unit.
- ▲ Operates on any potable water supply because it is virtually immune to corrosion.
- ▲ 150 psi maximum water working pressure.
- ▲ 426 psi maximum refrigerant working pressure.
- ▲ Available in 50-, 80-, and 119-gallon capacities, one of which will satisfy your hot water needs.

Note: These units are intended for indoor installation only.

FRE-HEATER MODEL "D" TECHNICAL SPECIFICATIONS

Model No. ¹	Mueller Part No.	Water Connection Sizes	No. of Refrig. Circuits	Refrig. Connection Sizes	Per Circuit Refrig. Application Refrig.	Per Circuit Refrig. Capacity ²	Dimensions Height	Dimensions Diameter	Approx. Shipping Wt. (lb)	Approx. Loaded Wt. (lb)
D-50	8823750	3/4" MPT	1	5/8" ODM	R-22	.5 thru 4	53 7/8"	21 3/4"	220	600
D2-50	8823751	3/4" MPT	2	5/8" ODM	R-22	.5 thru 4	53 7/8"	21 3/4"	220	600
D-80	8823780	3/4" MPT	2	3/4" ODM	R-22	1 thru 5	58 1/4"	25 1/4"	300	940
DE-80 ³	8823781	3/4" MPT	2	3/4" ODM	R-22	1 thru 5	58 1/4"	25 1/4"	300	940
DE-120 ³	8823822	1 1/2" FPT	2	1 1/8" ODM	R-22	3 thru 15	61 5/8"	29 1/2"	430	1,300
D-120	8823821	1 1/2" FPT	2	3/4" ODM	R-22	1 thru 7.5	61 5/8"	29 1/2"	430	1,300
D2-120	8823820	1 1/2" FPT	2	1 1/8" ODM	R-22	3 thru 15	61 5/8"	29 1/2"	430	1,300
DH-120	8823823	1 1/2" FPT	2	1 5/8" ODM	R-22	7 thru 35	61 5/8"	29 1/2"	430	1,300
DA-120 ⁴	8823826	1 1/2" FPT	2	1" MPT	R-717	5 thru 25	61 5/8"	29 1/2"	430	1,300

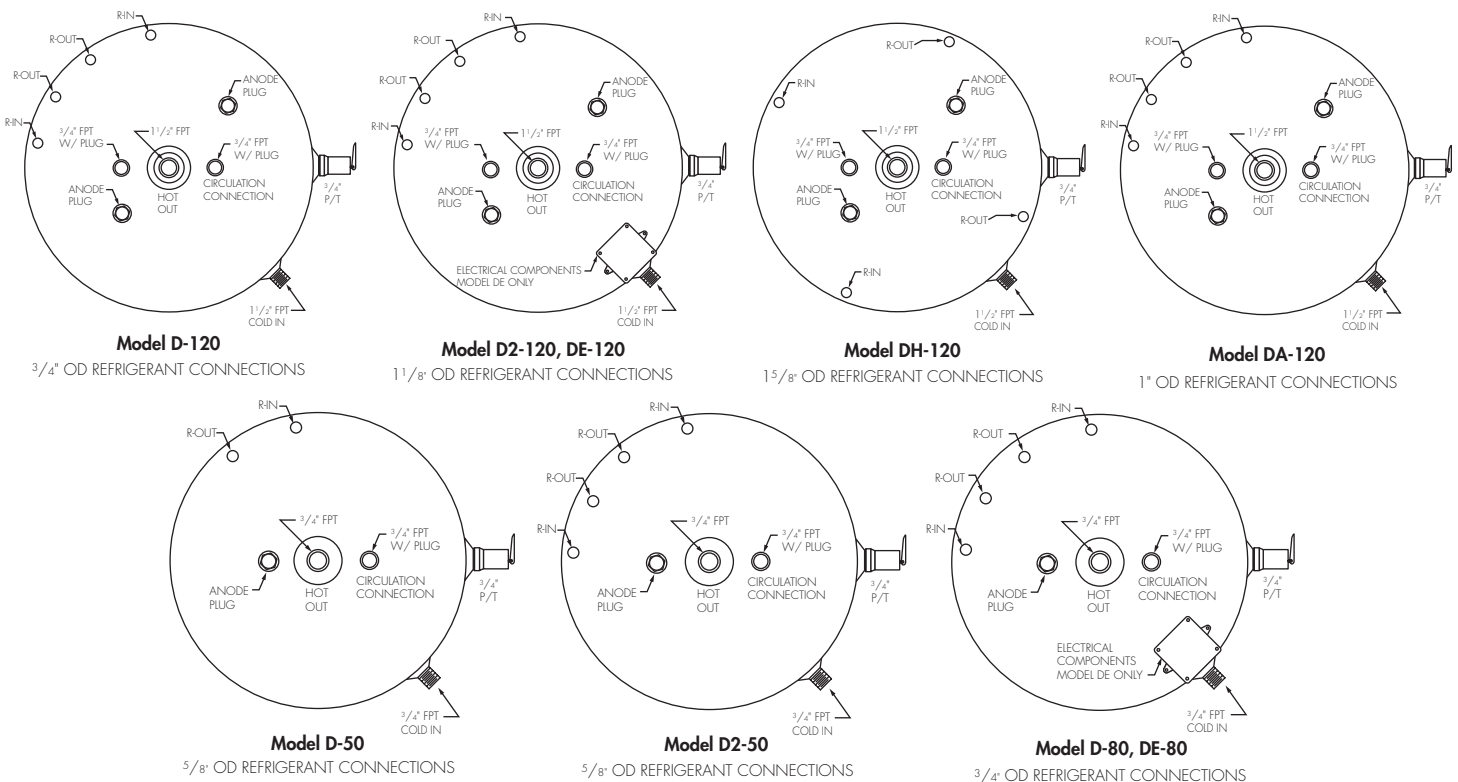
¹ Nominal water tank capacity: D-50/50 U.S. gallons; D-80 and DE-80/80 U.S. gallons; and D-120/119 U.S. gallons.

² Refrigeration tonnage capacities are evaporator tons and not heat of rejection tons. Conditions for the capacities are: 30°F evaporator, 110°F condensing temperature, and 50°F discharge gas superheat. Pressure drop through the Fre-Heater refrigeration circuit will be approximately 15 psi at the maximum tonnage application. Pressure drop at the mid-range tonnage will be approximately 5 to 7 psi. The highest percentage of heat recovered per ton is usually obtained at or below the mid-range of the refrigeration tonnage capacity.

³ "DE" models have one 4,500-watt, 240-volt electric element.

⁴ Ammonia only.

TOP HEAD LAYOUT



MUELLER®

**Contact your local Mueller representative or
call 1-800-MUELLER for additional information.**

P.O. Box 828 • Springfield, Missouri 65801-0828, U.S.A.
 Phone: (417) 831-3000 • 1-800-MUELLER • Fax: 1-888-446-8265
 www.muel.com • E-mail: refrigeration@muel.com

International Inquiries - Fax: (417) 831-6906 • E-mail: international@muel.com

©1998-2006 Paul Mueller Company



(5/06) O-1401