

2-8 3 x 5 Oversized Tank Falling Film Chiller Submittal



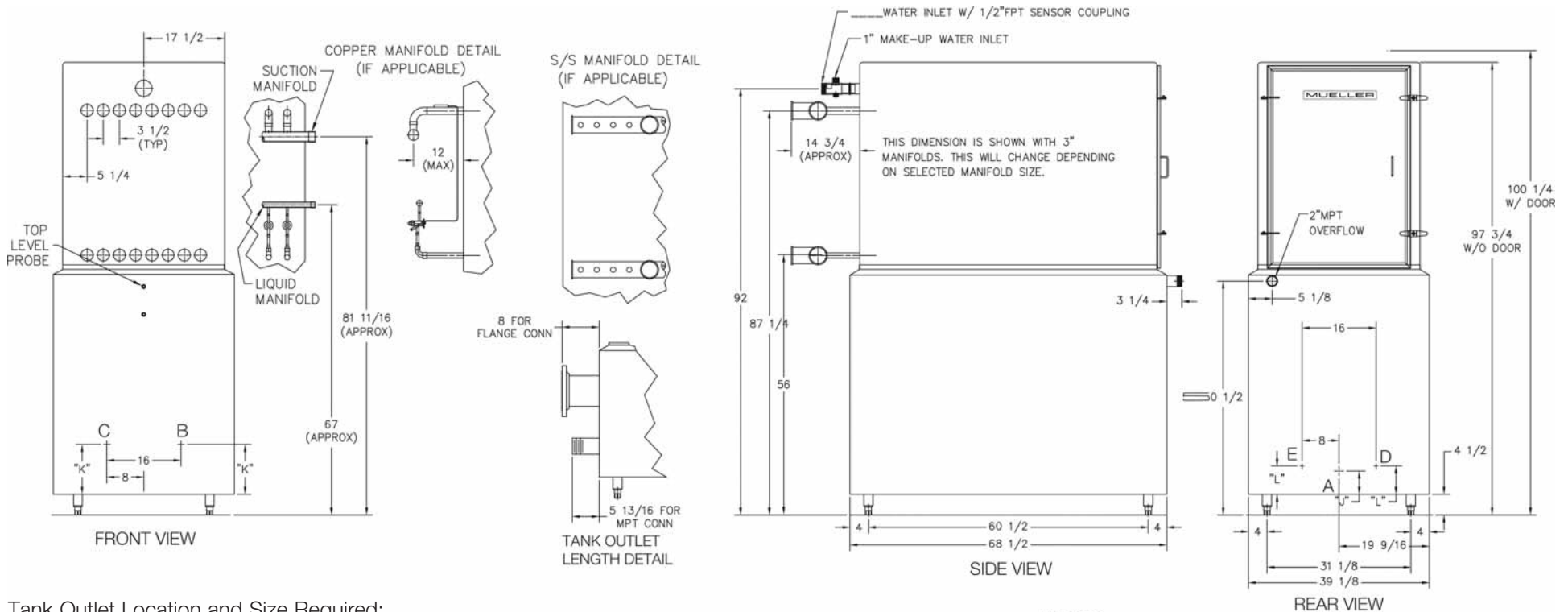
Model No.: _____

Refrigerant Type: _____

Evaporator Temp.: _____

Btuh Capacity: _____

No. of Plates: _____



Tank Outlet Location and Size Required:

A: _____ B: _____ C: _____ D: _____ E: _____

TANK OUTLET SIZE	USABLE TANK CAPACITY		
	"J"	"K"	"L"
6" RFSO FLG	6.4375"	11.3125"	7.3125"
4" MPT	5.25"	10.1875"	6.125"
3" MPT	4.8125"	9.6875"	5.6875"

REAR A	FRONT B & C		REAR D & E
	355 gal	317 gal	
376 gal	334 gal	370 gal	
384 gal	347 gal	378 gal	

a) TOTAL TANK CAPACITY TO TOP LEVEL PROBE IS 365 GALLONS.

S/S MAT'L TYPE	MAX SHIP WEIGHT (LBS)	MAX OPERATING WEIGHT (LBS)
R-22	304	2,020
R-717	304	2,020

NOTES:

- DO NOT FABRICATE FROM THIS DRAWING, ALL DIMENSIONS ARE SUBJECT TO CHANGE WITHOUT NOTICE.
- ALL DIMENSIONS ARE IN INCHES UNLESS SPECIFIED OTHERWISE.
- (6) SIX FOOT SERVICE SPACE REQUIRED, AT REAR OF FALLING FILM CHILLER ASSEMBLY TO PULL DISTRIBUTION PAN AND TEMP-PLATES.
- SUPPORT LEGS CAN BE ADJUSTED A FULL 2".
- PAUL MUELLER COMPANY IS NOT RESPONSIBLE FOR CORROSION OR SUITABILITY FOR USE OF ANY MATERIAL IN ANY PARTICULAR APPLICATION. THE CORROSION RESISTANCE AND SUITABILITY FOR USE OF A MATERIAL IS DEPENDENT ON OPERATING ENVIRONMENT AND CONDITIONS, CLEANING PRACTICES AND MANY OTHER FACTORS BEYOND THE CONTROL OF THE EQUIPMENT FABRICATOR. THE USER OF THE EQUIPMENT BEARS TOTAL RESPONSIBILITY FOR CORROSION OR SUITABILITY FOR USE OF ALL MATERIALS IN THEIR PARTICULAR APPLICATION.